



Instinct Guides You



Louviers Road, Weymouth Offers In Excess Of £210,000

- No Onward Chain
- Three Bedroom Family Home
- Generous Kitchen/Dining Room
- Communal Off Road Parking At Rear
- Close To Amenities & Regular Bus Route
- Rear Westerly Aspect Garden
- Country Walks Nearby
- Set Back From Main Road



Registration No. 08079158 Directors Mr Wilson, Mr Tominey

Courtesy Notice Upon using WilsonTominey as selling agents ensure we are made aware of contractual obligations you may be under. We can then proceed accordingly.

WilsonTominey Ltd
15 Westham Rd.
DT4 8NS

T 01305 775500
E sales@wilsontominey.co.uk
W www.wilsontominey.co.uk



Offered With no onward Chain this three bedroom family home offers generous proportions throughout, a westerly aspect rear garden, communal parking and spacious kitchen/dining room. The property sits within convenient catchment of bus routes, amenities & country walks.

The heart of the home is the generously sized front aspect living room, which offers ample space for a range of furniture and a front facing window that captures the morning sun. The kitchen/diner offers a range of fitted units with work surfaces, an integral double oven, inset gas hob with extractor, and space for appliances including washing machine, fridge/freezer, and tumble dryer. There is ample room for a dining table and it enjoys a pleasant view into the rear garden.

Upstairs, the landing provides loft access and two storage cupboards, one of which houses a boiler that the vendor informs us has been installed in 2025. Doors lead to three bedrooms and the bathroom. Bedroom one is a spacious double with built-in open wardrobe. Bedroom two is another double with built-in wardrobe and shelving, while bedroom three is a single that offers versatility for those working from home as an office or study. The bathroom features a modern suite including a P-shaped bath with shower over, WC, wash basin, heated towel rail, and tiled walls and flooring.

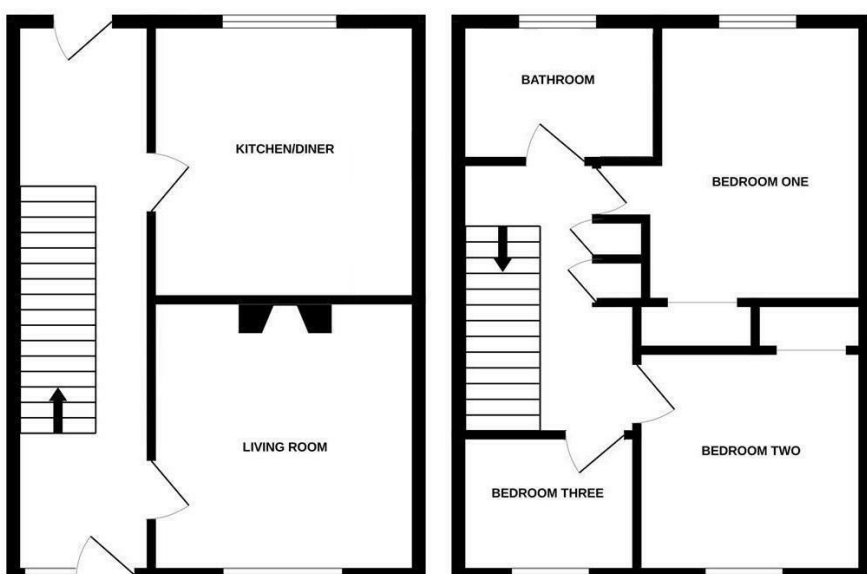
Outside, the rear garden has been finished with a low maintenance approach in mind, a patio offers a space to entertain and enjoy the westerly aspect before a lawn runs to the back boundary. The garden also benefits from a brick-built store, two sheds and gated access to a communal car park. The front garden is lawned with shrubs and a path to the main entrance.

The property is set back from Louviers Road along a pedestrian footpath, offering excellent convenience for local amenities including doctors, schools, and a range of shops.

NB Parking is not allocated or owned in any part to the property.



- Kitchen/Dining Room 11'9" x 11'5" (3.60 x 3.48)**
- Living Room 11'7" x 11'4" (3.54 x 3.47)**
- Bedroom One 11'11" max x 9'4" max (3.65 max x 2.85 max)**
- Bedroom Two 9'8" x 9'8" (2.96 x 2.95)**
- Bedroom Three 7'8" x 5'11" (2.34 x 1.81)**
- Bathroom 8'7" x 5'3" (2.63 x 1.62)**



Energy Efficiency Rating		Current	Potential
Very energy efficient - lower running costs			
(92 plus) A			
(81-91) B			
(69-80) C			
(55-68) D			
(39-54) E			
(21-38) F			
(1-20) G			
Not energy efficient - higher running costs			
England & Wales	EU Directive 2002/91/EC		

Environmental Impact (CO ₂) Rating		Current	Potential
Very environmentally friendly - lower CO ₂ emissions			
(92 plus) A			
(81-91) B			
(69-80) C			
(55-68) D			
(39-54) E			
(21-38) F			
(1-20) G			
Not environmentally friendly - higher CO ₂ emissions			
England & Wales	EU Directive 2002/91/EC		

Important Notice: Particulars are prepared for marketing purposes only and should not be treated as a statement of the condition of any building, fixture or appliance. All measurements, floor plans and lease/ maintenance are approximate and not to be relied upon. Purchasers should make their own checks before relying on any of the information provided herein. * For double glazing and gas radiator heating, it is where specified.